



GAT MONTHLY MEMBERSHIP PROGRESS REPORT

Results as of: 5/31/2023

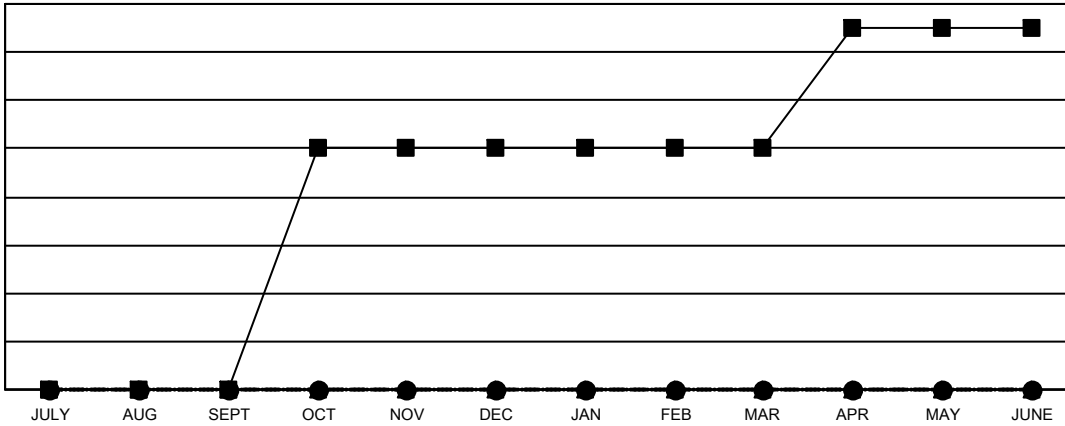
Multiple District C

LOCATION: ALBERTA

Clubs			
RESULTS FOR 2022-2023			
QUARTER	NEW CLUB GOAL	NEW CLUBS	DROPPED CLUBS
JULY/AUG/SEPT	0	0	1
OCT/NOV/DEC	2	0	0
JAN/FEB/MAR	0	0	0
APR/MAY/JUNE	1	0	0

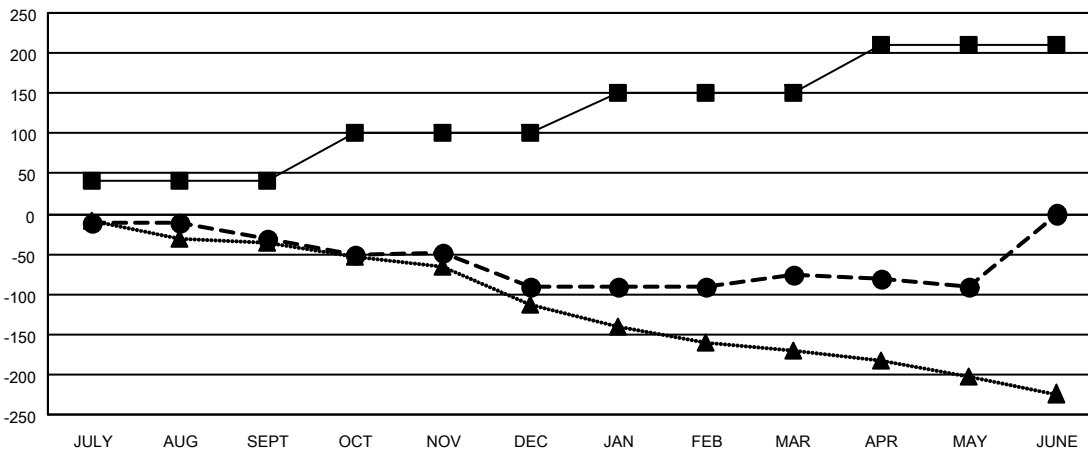
Members			
RESULTS FOR 2022-2023			
QUARTER	MEMBER GROWTH NET GOAL	MEMBER GROWTH ACTUAL	DROPPED MEMBERS ACTUAL (including transfers)
JULY/AUG/SEPT	40	63	87
OCT/NOV/DEC	60	89	144
JAN/FEB/MAR	50	97	75
APR/MAY/JUNE	60	63	69

GOALS AND ACTUAL NEW CLUBS CUMULATIVE



- - CURRENT YEAR GOALS FOR NEW CLUBS
- - CURRENT YEAR ACTUAL NEW CLUBS
- ▲ - LAST YEAR ACTUAL NEW CLUBS

GOALS AND ACTUAL MEMBERS CUMULATIVE



- - MEMBER GROWTH NET GOAL
- - MEMBER GROWTH ACTUAL
- ▲ - LAST YEAR MEMBERSHIP ACTUAL

DROPPED CLUBS: 1	88 CLUBS OF 176 ADDED 1 OR MORE NEW MEMBERS	GENDER DISTRIBUTION
DROPPED MEMBERS	CLICK HERE FOR CUMULATIVE MEMBERSHIP DATA	MALE 2,306 (67.90%)
DECEASED 54		FEMALE 1,090 (32.10%)
CLUB CANCELLED 0		NON BINARY 0 (0.00%)
OTHER 322		PREFER NOT TO ANSWER 0 (0.00%)
TOTAL 376		TOTAL FAMILY UNIT MEMBERS 605
		FAMILY MEMBERS PAYING HALF DUES 307